

multipli **C I T Y**

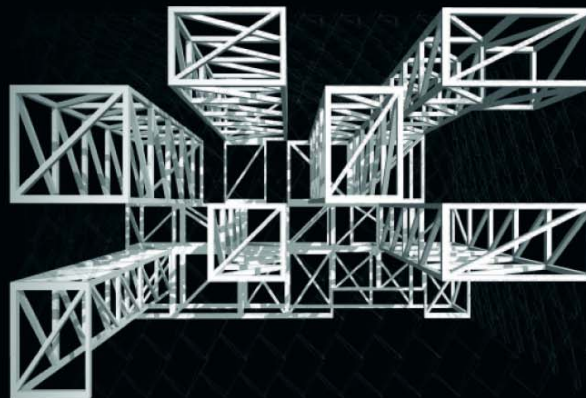
Hong Kong is a multi-network connected by individuals with "Unlimited Potential".
香港是由市民集體構成的多元網絡，潛能無限。



• Exhibition is structured into 3 types of space:
多樣體驗由三種空間交錯構成。

- Courtyard: opened, natural lighting
- Box: controlled acoustic and lighting
- Face: continuous projection / digital panels

庭: 開放式、自然光。
廂: 調控式環境、隔音。
面: 延續式投影或陣點顯示壁。



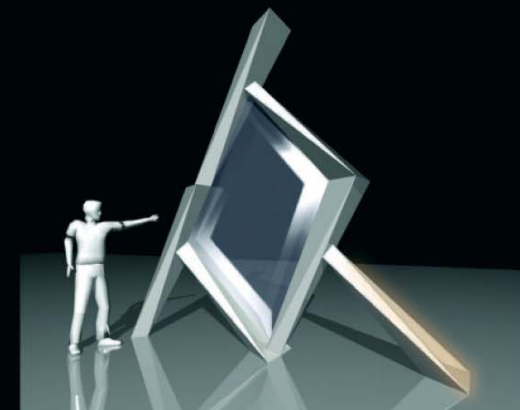
Structure 結構

• Different exhibition spaces act as truss beams, spanning across peripheral structural skin, forming a steel mega-frame structure.
巨型框架結構由模組外壁和展覽單位內的桁架交叉組成。

• The module is designed to signify each individual, “人”。
模組由「人」組成。

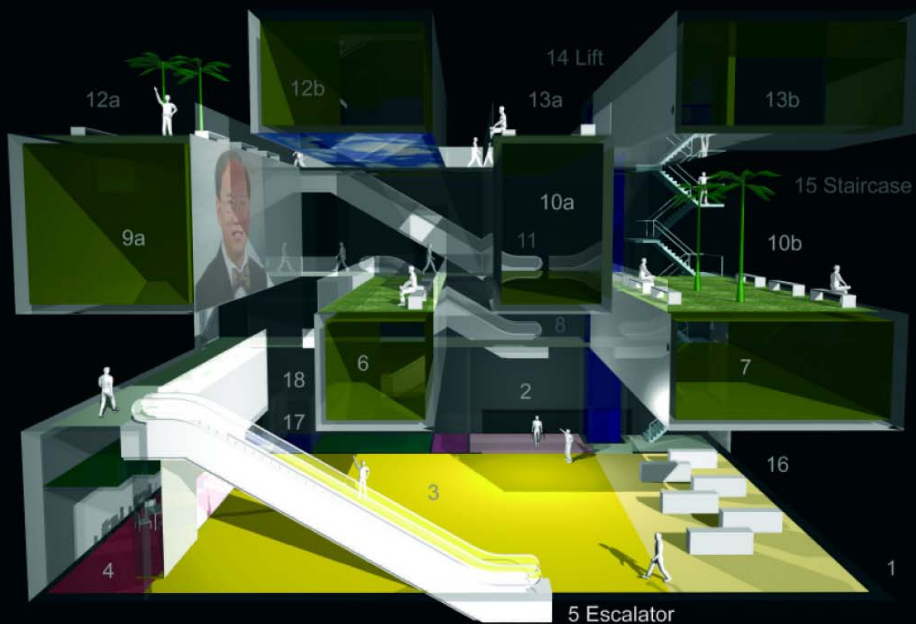
• Tri-color LED is concealed within each white module for color changes.
白色模組內藏三色發光二極體，可投射多種顏色。

• The structural frame is infilled with eco-friendly **ETFE** air cushion.
骨架內採用輕量、安裝容易及可循環再用的聚氟乙烯充氣枕。



Module “人” + ETFE + LED 模組、充氣膜、色燈

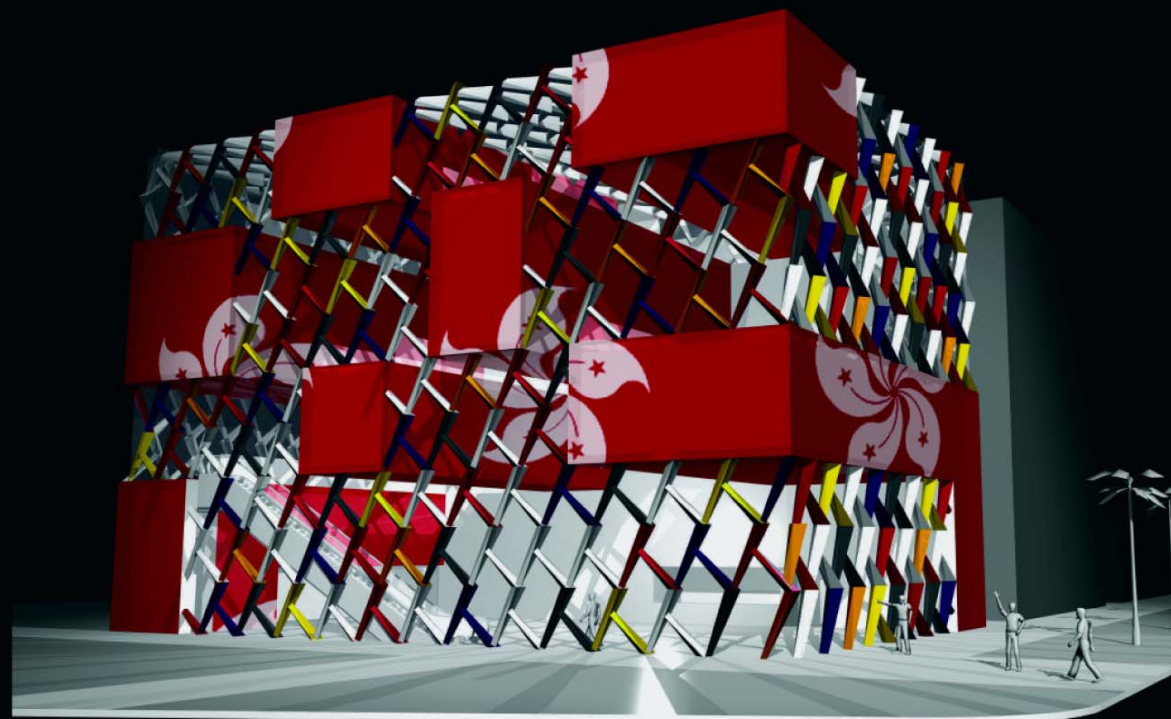
Section 剖面



• Activities within ‘Boxes’ affect their external ‘Faces’, interacting with ‘courtyards’ through multi-media devices.
利用多媒體設備，「廂」內活動可透過「面」與「庭」雙向互動。

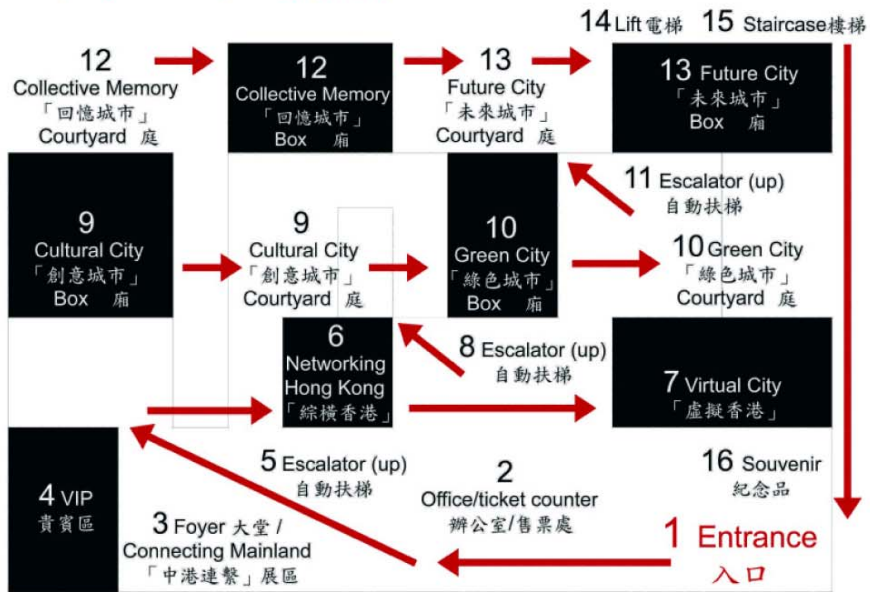
Level (m)

+20.00
+16.00
+10.00
+6.00
+0.00



• Interactive digital display or projection system could be installed on the continuous internal and external surfaces.
壁面內外延伸，可配置陣點顯像或投影設備。

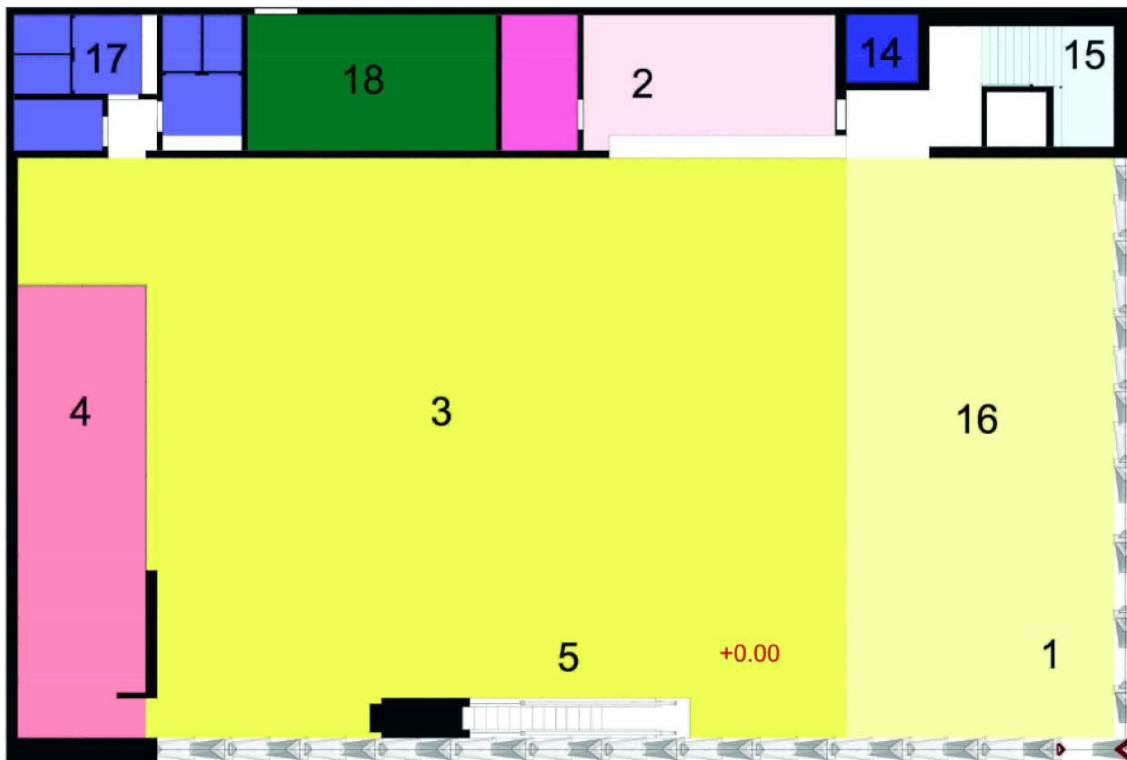
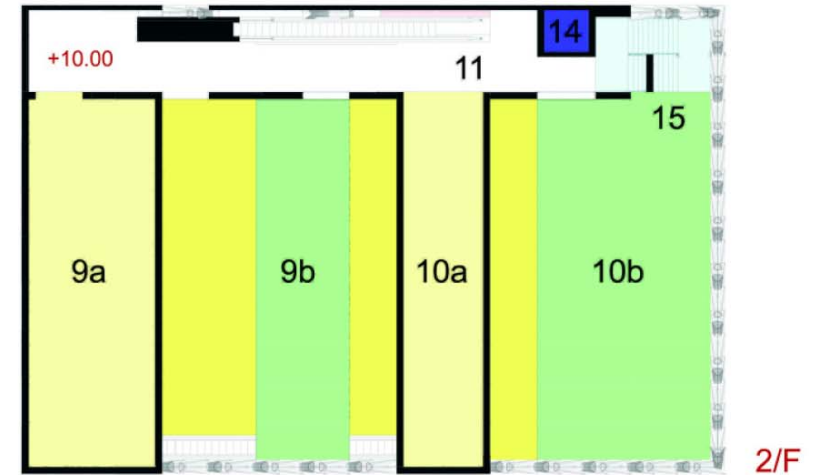
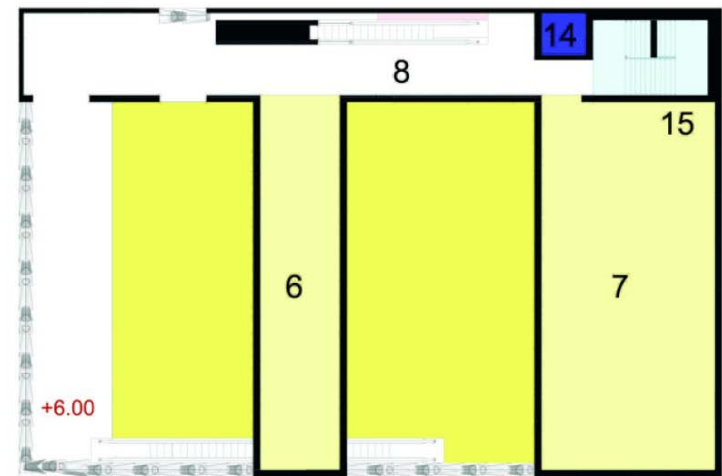
Looping Concept 循環概念



service lane facing site B

Interpretive Plan 遊程

- 1 Entrance 入口
- 2 Office / ticket counter 辦公室 / 售票處
- 3 Foyer / Connecting Mainland (infrastructure) 大堂 「中港連繫」展區
- 4 VIP reception 貴賓區
- 5 Escalator (up) 自動扶梯
- 6 Networking Hong Kong (domestic network) 「綜橫香港」展區
- 7 Virtual City (information / telecommunication) 「虛擬香港」展區
- 8 Escalator (up) 自動扶梯
- 9 Cultural City (diversity, harmony, creativity) 「創意城市」展區
a Box 廂 b Courtyard 庭
- 10 Green City (rural, sustainable environment) 「綠色城市」展區
a Box 廂 b Courtyard 庭
- 11 Escalator (up) 自動扶梯
- 12 Collecting Memory (heritage, conservation) 「回憶城市」展區
a Courtyard 庭 b Box 廂
- 13 Future City (urban renewal, development) 「未來城市」展區
a Courtyard 庭 b Box 廂
- 14 Lift 電梯
- 15 Staircase 樓梯
- 16 Souvenir 紀念品
- 17 WC 洗手間
- 18 Plant room 機電房



G/F Plan 1:100
 大堂平面圖



0.0 Design Concept – MultipliCITY 設計概念

Hong Kong is a multifaceted network connected by individuals with “Unlimited Potential”.

香港是一個多面網絡，由潛力無限的市民集體構成。

1.0 Façade 外壁

- ◆ The module is designed to signify each individual, “人” .
模組由「人」組成。
- ◆ Tri-color LED is concealed within each white module for possible color changes.
白色模組內藏三色發光二極體，可投射多種顏色。
- ◆ Interactive digital display or projection system could be installed on the continuous internal and external surfaces.
壁面內外延伸，可配置陣點顯像或投影設備。
- ◆ The structural frame is infilled with eco-friendly ETFE (Ethylene - tetrafluoroethylene) air cushion. This material is lightweight, recyclable and easy to install.
骨架內採用輕量、安裝容易及可循環再用的聚氟乙烯充氣枕。

2.0 Construction 結構

Different exhibition spaces act as truss beams, spanning across peripheral structural skin, forming a steel mega-frame structure.

巨型框架結構由模組外壁和展覽單位內的桁架交叉組成。

3.0 Eco-friendly Design 綠色設計

- ◆ Lightweight and dry construction 輕量及乾法施工
- ◆ Recyclable materials 可循環物料
- ◆ Indoor planting and green area 室內綠化

4.0 Spatial arrangement 空間設計

To provide a ‘multipliCITY’ experience, exhibition is structures into 3 types of space:
多樣體驗由三種空間交錯構成。

- ◆ Courtyard: opened, natural lighting

庭: 開放式、自然光。

- ◆ Box: controlled acoustic and lighting
廂: 調控式環境、隔音。
- ◆ Face: continuous projection / digital panels between Boxes and Courtyards
面: 延續式投影或陣點顯示壁。

Activities within 'Boxes' will affect their external 'Faces' that interacting with different 'courtyards' through multi-media devices.

利用多媒體設備，「廂」內活動可透過「面」與「庭」雙向互動。

5.0 Interpretive Plan 遊程

- | | | | |
|----|---|-------------|-----------------|
| 1 | Entrance | 入口 | |
| 2 | Office / ticket counter | 辦公室 / 售票處 | |
| 3 | Foyer / | 大堂 | |
| | Connecting Mainland (cross-border infrastructure) | | 「中港連繫」展區 |
| 4 | VIP reception | 貴賓區 | |
| 5 | Escalator (up) | 自動扶梯 | |
| 6 | Networking Hong Kong (domestic network) | | 「綜橫香港」展區 |
| 7 | Virtual City (information / telecommunication) | | 「虛擬香港」展區 |
| 8 | Escalator (up) | 自動扶梯 | |
| 9 | Cultural City (cultural diversity, harmony, creativity) | | 「創意城市」展區 |
| | a | Box 廂 | |
| | b | Courtyard 庭 | |
| 10 | Green City (rural, sustainable environment) | | 「綠色城市」展區 |
| | a | Box 廂 | |
| | b | Courtyard 庭 | |
| 11 | Escalator (up) | 自動扶梯 | |
| 12 | Collective Memory (heritage, conservation) | | 「回憶城市」展區 |
| | a | Courtyard 庭 | |
| | b | Box 廂 | |
| 13 | Future City (urban renewal, development) | | 「未來城市」展區 |
| | a | Courtyard 庭 | |
| | b | Box 廂 | |
| 14 | Lift | 電梯 | |
| 15 | Staircase | 樓梯 | |
| 16 | Souvenir | 紀念品 | |
| 17 | WC | 洗手間 | |

18 Plant room

機電房