

Pavilion of Infinity

THE [VOID] - THE INFINITE DIMENSION UNFOLDED FROM WITHIN THE PHYSICAL BOUNDARY

THE PAVILION REPRESENTS A CITY WITH A PHYSICAL BOUNDARY SLASHED TO UNFOLD ITS INFINITE DIMENSION - THE IMAGINATION [VOID] WHERE IDEAS CAN GO BEYOND ANY PHYSICAL BOUNDARY. THIS IMMENSE [VOID] WITHIN THE TIGHTLY INTERWOVEN CITY FABRIC OF HONG KONG IS WHERE THE BOUNDLESS POTENTIAL OF A DYNAMIC CITY IS REVEALED.

MATERIALS & SUSTAINABILITY

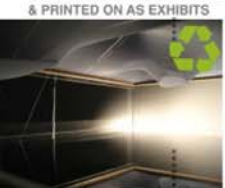
HIERARCHY OF EXHIBITS



POLYETHYLENE NON-WOVEN TEXTILE TO GIVE A SENSUOUS SKIN FOR THE PAVILION :



TRANSLUCENT MEMBRANE TO PROVIDE A SMOOTH INNER LAYER ALSO AS SCREENS FOR PROJECTIONS & PRINTED ON AS EXHIBITS



REFLECTIVE MEMBRANE AS SKY & GROUND FOR [VOID]



THE DOUBLE SKIN

PROGRESSION



ONENESS WITH NATURE



UNBOUNDLESS IMAGINATION



VIBRANT BUILT CITY

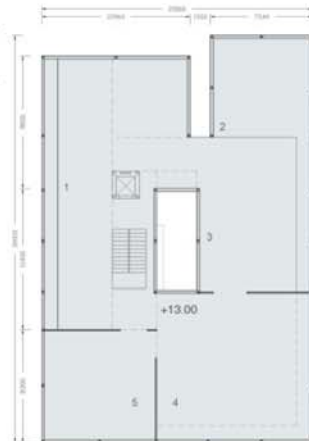


TIGHTLY INTERWOVEN CITY FABRIC GENERATES THE PLAN FOR THE PAVILION, WITHIN WHICH THE BOUNDLESS POTENTIAL OF A DYNAMIC CITY IS REVEALED



THE [VOID] DIVIDES THE PAVILION INTO THREE LEVELS AND THE EXHIBITS ARE DISPLAYED IN ACCORDANCE TO THE HIERARCHY/ LEVELS OF CITY DEVELOPMENT, CORRESPONDING TO THE SIX THEMES OF THE HONG KONG PAVILION.

THE CONTRAST OF THE THREE LEVELS OF EXHIBITS IS TO CALL UPON THE VISITORS TO RE-THINK ON THE POSITIONING OF A CITY, AND THE DEFINITIONS FOR A BETTER CITY AND A BETTER LIFE.



- 1 ELONGATED VIDEO WALL
- 2 OPEN AIR GREEN CORNER
- 3 VIDEO WALL
- 4 VIDEO ROOM

3rd LAYER - SUNDECK - ENVISAGED FUTURE THEMATIC COMPONENTS - SUSTAINABLE QUALITY CITY LIFE

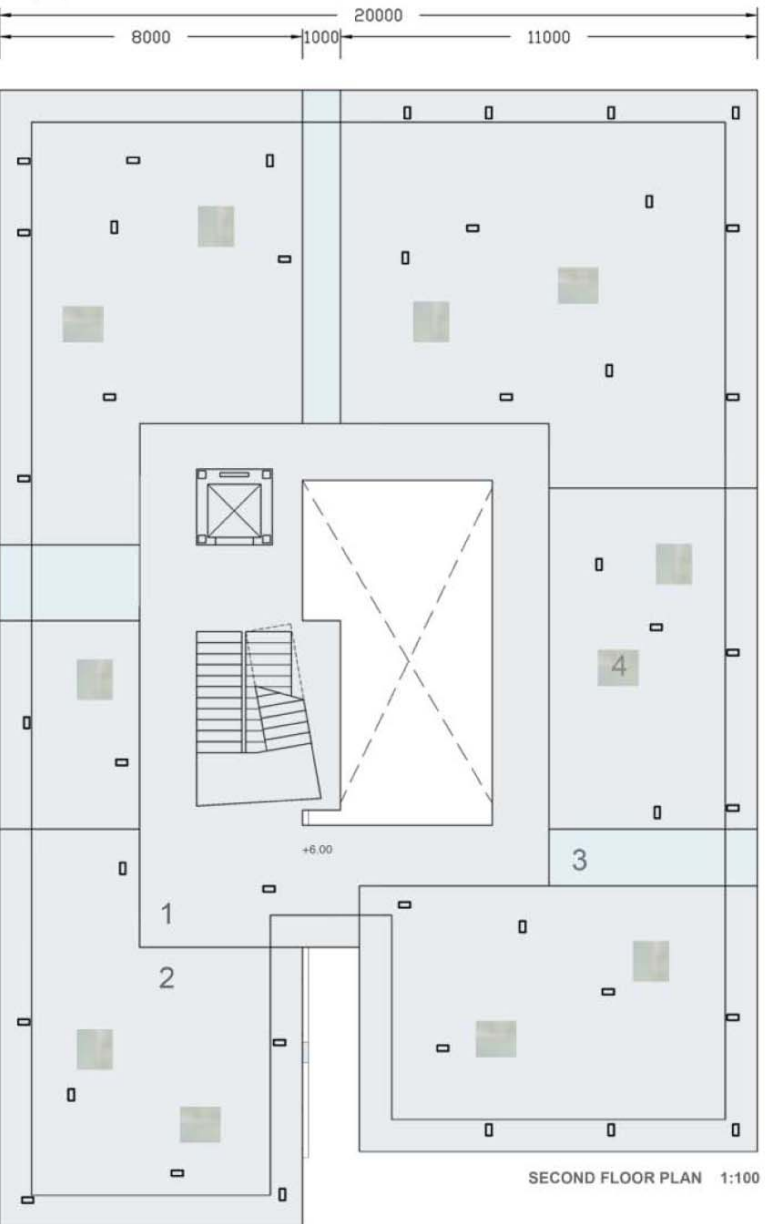
PROGRESSION



FROM THE INTERMEDIATE INFINITE [VOID], VISITORS ASCEND TO JOIN THE TRUE BEAUTY OF THE REAL WORLD . ON THIS NATURALLY VENTILATED AND LIT UP SUN DECK SHLETERED BY MEMBRANE CEILING IS DISPLAYED LIVE VIDEOS OF HONG KONG'S SPLENDID OUTSKIRTS AND NATURAL WONDERS. THIS CONNECTION TO NATURE IS REGARDED AS AN UNIVERSAL URGE OF HUMAN BEINGS & THE SOURCES & POWER FOR CREATIVITY.

A VIDEO ROOM ALSO FEATURES PROGRAMMES ON URBAN RENWAL AND VISIONS FOR FUTURE GREEN CITIES.



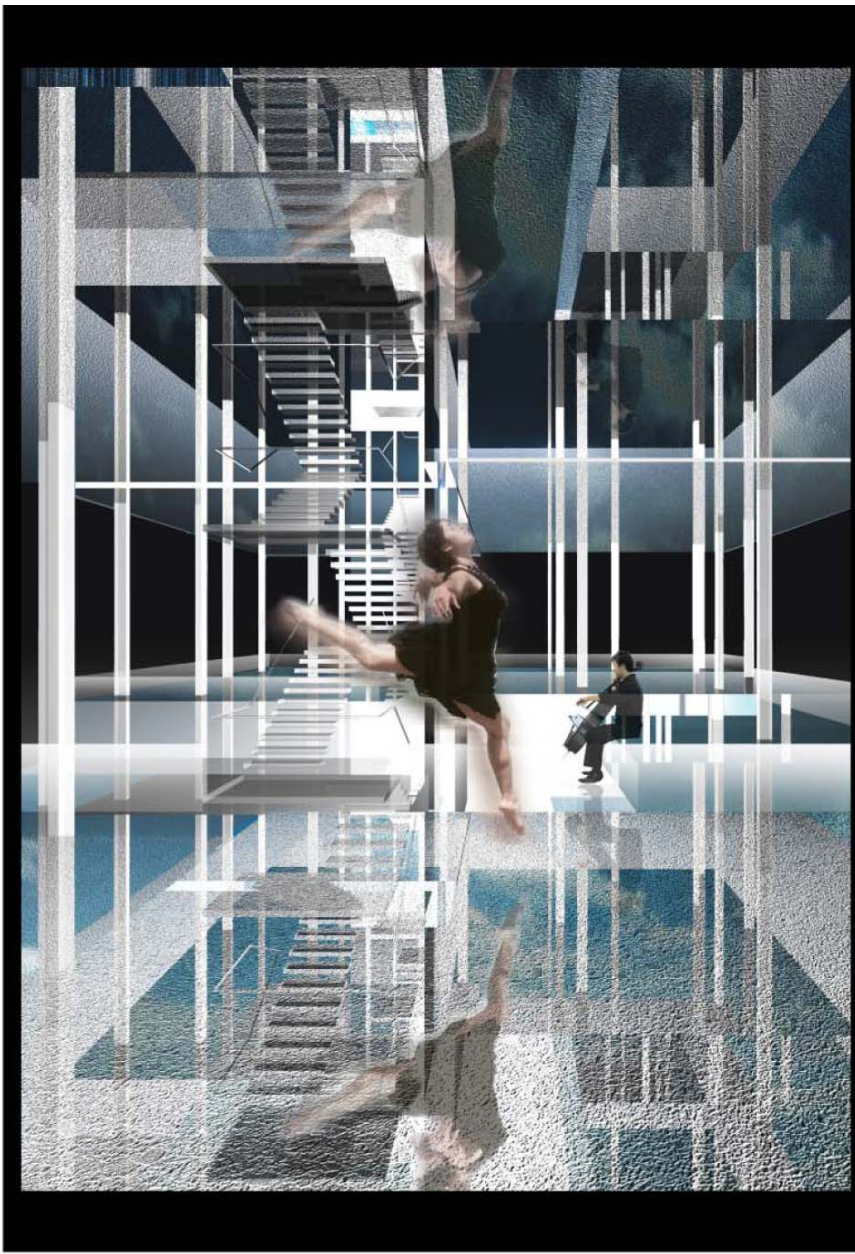


SECOND FLOOR PLAN 1:100

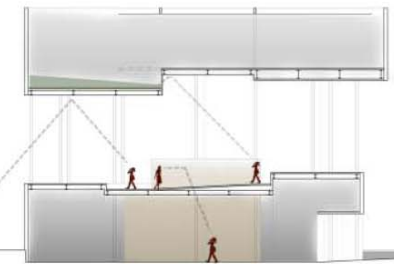
- 1 NON SLIPPERY FLOORING
- 2 PLATFORMS WITH REFLECTIVE MEMBRANCE ON RECYCLED RUBBER
- 3 SKYLIGHT
- 4 LCD DISPLAY

2nd LAYER - THE [VOID] - INFINITE CREATIVITY
 THEMATIC COMPONENTS: ADVANCED INFORMATION TECHNOLOGY/
 FINANCIAL & TRADING SYSTEM/ CULTURAL DIVERSITY & CREATIVITY

GOING FURTHER UP, VISITORS EMERGE FROM THE ENCLOSED EXHIBITION ROOMS TO THE OPEN UNDULATING LANDSCAPE & THE INFINITE VISUAL SPACE. THE REFLECTIONS GENERATED BY REFLECTIVE PLATFORM & SKY SYMBOLIZE THE INFINITE NATURE OF CREATIVITY THAT WOULD BE UNFOLDED WITHIN THIS INTERACTIVE SPACE.



THE UNDULATING LANDSCAPE, MADE OF RECYCLED RUBBER COVERED WITH REFLECTIVE MEMBRANE, IS EMBEDDED WITH INTERACTIVE MONITORS AND SHOWCASES. IT PROVIDES AN OPEN EXPLORATIVE PLATFORM FOR VISITORS, AND AN LARGE OPEN PLATFORM FOR THE PERFORMANCES OF ART OF THE VARIOUS CULTURES IN THE CITY.



VISITORS WILL FIRST GET A TASTE OF THE DENSE FITY FABRIC OF HONG KONG BY INTERMINGLING AMONG THE "EXHIBITION BLOCKS" & WALKING THROUGH LARGE SCALE MODELS OF THE CITY SUPERSTRUCTURE AND INFRASTRUCTURAL CONNECTIONS WITH THE MAINLAND CHINA AND THE WORLD.

THROUGH THE CENTRAL LANE AMONG THE "EXHIBITION BLOCKS", THE VISITORS WILL GET A GLIMPSE OF THE [VOID] ABOVE.



- 1 ENTRANCE
- 2 RECEPTION & CLOAK ROOM
- 3 VIP ROOM
- 4 EXHIBITION AREA
- 5 TOILET
- 6 STORE
- 7 M&E ROOM
- 8 SOUVENIR



GROUND FLOOR PLAN 1:300

PROGRESSION



PROGRESSION

THE SLASH ON THE PAVILION & THE [VOID] UNFOLDED AROUSES THE CURIOSITY & IMAGINATION OF VISITORS FROM DISTANT. THE PAVILION'S SENSUOUS SKIN MADE OF POLYETHYLENE NON-WOVEN TEXTILE WAVES WITH WIND AND SUBTLY ALTERING ITS TEXTURE AND LIGHTING, ADDS A DIMENSION ON THE INTANGIBLE RELATIONSHIP BETWEEN MAN & NATURE.

1st LAYER -
THE INTERWEAVING CITY
 THEMATIC COMPONENTS : EXCELLENT INFRA-STRUCTURE & CONNECTIVITY WITH MAINTLAND CHINA & WORLDWIDE / WELL-CONNECTED & EFFICIENT DOMESTIC TRANSPORTATION



DESIGN STATEMENT

The Preciousness Void

The pavilion represent **a city with a physical boundary slashed to unfold its infinite dimension** - the **imaginative "VOID"** where ideas go beyond any physical boundary. Within this VOID, the boundless potential and diverse faces of a dynamic city are unlaced for everyone to explore.

The VOID to attract - The void forms a **distinctive visual element** on the pavilion's appearance and arouses curiosity and imagination at distant.

The VOID to Connect - The pavilion as the simplest structure by which man positions himself in the natural environment has **universal meanings** across culture and time. In our design the VOID in the pavilion symbolizes a VOID of connection - to connect different races, past & future, man and nature, physical and super-physical.

Hierarchy of Development around the VOID - the VOID divides the pavilion vertically into three layers in an ascending levels of the city development of Hong Kong - from the city built environment and infrastructure, to the infinitive creativity, and on the top to the envisaged future for a green sustainable environment. Each level employs **distinctive illustrative means** to exhibit the corresponding themes as detailed below.

Area Summary

Exhibition halls are located at G/F, 1/F and 2/F, with total area =approx. 1000sq.m. The VIP reception area(approx 50 sq.m), souvenir counter, office and plant room are located at office at ground floor.

COMMUNICATIVE OBJECTIVES

The Pavilion is to **share** with world-wide visitors **the enchanted and precious qualities of the Hong Kong City** - its compactness, vibrancy and convenience, the ability and creativity to transcend limitations and constraints into potentials and advantages, and its endowment of a splendid nature which all form integral parts of the balanced and quality city life of Hong Kong. Above all, the pavilion is to bring out **the vision for a better life and a better city through the intricate interplay among the three levels of the city development.**

3 Layers of Experiences - The pavilion takes on a form of **3** main layers to illustrate the above:

1st layer – City Fabric & Infrastructure

Visitors entering from the plaza, will first get **a taste of the dense city fabric** of Hong Kong by walking through **large scale models** of the existing and future superstructure and infrastructure connections with the mainland China and the world.

2nd layer – Infinitive Creativity & Idea Exchange

Going further up, visitors will emerge from the more enclosed environment to the open intermediate landscape layer. The **infinite reflections** generated by the reflective membranes on its sky and ground symbolize the infinitive nature of creativity that is to be unfold within this interactive space. **The undulating landscape is embedded with interactive screens and showcases** displaying the open and sophisticated financial and trading system, high information technology and the embodiment of highly diversified cultures. **LED lights** embedded onto the structural columns interact with the screens to turn the VOID into a transparent space for information exchange. The platform is also a **large open area for performances and cultural exchange.**

3rd layer – Envisaged Future

Up from the VOID to the uppermost layer, visitors are received with the true beauty of the physical world. Under sunscreens with **gentle natural light and ventilation** are large projections of **real-life videos of the natural wonders** of Hong Kong. A video room also features documentaries on the Hong Kong's **urban renewal and sustainable city development.**

Through the distinct experiences through the three levels, the visitors are called to rethink on the position of cities and the true meaning of better city and better life.

SUSTAINABLE DESIGN

Sustainable designs are employed throughout the pavilion in the following aspects:

Material and construction - this 6-month pavilion takes a lightweight, prefabricated and demountable **steel-frame structure** composed of mainly **recycled/ recyclable/ reusable materials.**

Double-layer skin is employed to give high insulating performance. The outer layer is made of **polyethylene non-woven textile** which forms the **sensuous appearance** of the pavilion and also acts as an insulating layer. The inner layer is **recyclable membrane sheeting** to provides thermal and sound insulation while forming a smooth translucent surface for the interior exhibition spaces and acts as screens for projections and printed on for exhibitions. This translucent sheeting will also be used for the sun-screens on the upper sun deck. Reflective sheeting will be employed for the ceiling and the platforms of the middle "VOID". Both skins are highly durable and the membrane is also highly reusable for other exhibition projects after the exhibition period.

The pavilion from inside out enables a delighting and refreshing experience and interaction with nature/ environment which is the essence and the beauty of the pavilion.

2010 中國上海世博 香港館概念設計比賽 設計演說

本香港館的設計象徵著有限的城市空間中所蘊含的無想像及創意空間。外觀上它好比將一組密集的建築物群從中央削開，形成一條空隙，從而展示出內藏的**”無限尺度”**。透過反光薄膜鋪成的天花及平台相互映照成一奇特的視覺空間，從空隙中映射出來，為館內外的參觀者引來無限想像。於這**”無限尺度”**內參觀者可自由窺探香港城市的多樣性——包容，自由，向前，千變萬化，充滿生機及驚喜。

亭，作為一人類立身大自然的最基本建築然的最基本建築，對各民族各時代具同樣意義。本館設計參照亭的形式，而中央的空隙則象徵著**一時空及地域上的連接點**— 連接過去與將來，城市與郊區，不同種族文化，人與自然，有形與無形。

這**”無限尺度”**將展館縱向分為三層，並依次由地面首層到三層展示**香港城市發展的不同層次**——地面首層為城市的有形建設及設備，二層為城市的包容，無限創意及自由開放，三層則為與自然結合及可持續發展的最高層次。這三層展廳並各以獨特形式展示其相對應的香港館主題。

項目指標

展覽館於首,二及三層共約 1 0 0 0 平方米，貴賓廳於首層約 5 0 平方米，首層另設紀念品店，辦公室及機電房等。

展館目標

本香港館設計的目標是與來自世界各地的參觀者**分享香港的獨有文化及寶貴的特質**——城市的緊湊及動力，將限制化為潛能及優勢的力量，以及咫尺可達而又美不勝收的海灘、島嶼及山林——這些皆為香港優質生活不可或缺的一部分；並展示對未來**城市生活與自然融合及可持續發展的展望**。

參觀者的體驗

本設計包括三層展覽部份：

地面首層——城市肌理及基礎建設

於首層參觀者會穿越各個展示著香港優秀基礎建設的**大型模型**，**初嚐香港城市的密集緊湊**，並於**”橫街窄巷”**中窺見二層的**”無限尺度”**。

二層——無限創意、無限思維、訊息流通

參觀者往上走並由密集的室內展廳過渡到二層**開揚的起伏空間**。天地相互倒映出**”無限尺度”**，象徵著想像空間及訊息世界的無窮無盡。**高低平台上裝著互動屏幕及展盒**，展示著香港開放流通的經濟體系，資訊科技和物流運輸，以及多元文化薈萃及創意產業。**互動屏幕並接駁到結構柱上的 LED 燈**，使這層的**”無限尺度”**成為一個訊息互通的透明世界。此平台並提供一**開揚空間供不同文族的藝術展出及文化交流**。

三層——綠色城市，展望未來

從二層的無窮視覺空間，參觀者將於三層重回真實世界。牆身屏幕上投射著**西貢海灘、大嶼山群山疊影**等的**即時影像**，在柔和的自然光線下，參觀者仿如置身世外桃園。映象廳中並播放著有關香港**文化保育、市區重建**等可持續發展的影片，讓參觀者**思考城市的未來發展**，以及**美好城市及美好生活的真正定義**。

可持續設計

可持續發展為美好城市，美的生活的根本條件。可持續設計灌串著整個香港館有形及無形的設計，包括**物料選材及建造方法**，以及其**意識形態**，以呈現人與自然不可分割的微妙關係。

鑑於展館的臨時性質，設計採用輕盈的**預製鋼架結構**，主要材料為**可循環再用或再造物料**。鋼架上裝有一**雙層外皮**，外層為層疊的仿如紙張的**聚久烯無紡布**，這材料高耐用，並可百分百回收再做，**風吹時於上面形成波浪紋**，構成了香港館的**獨特外觀**，並同時發揮著**保溫層**的功能。

內層為高耐用**半透薄膜**，並可**隔熱及隔音**。它於展館內形成一半透明的平滑牆面，並**可供投射影片及印上展品**。此半透明薄膜並會用作三層的帳篷。二層平台及天花則用高反射度薄膜以相互映照出**”無限尺度”**。平台的薄膜鋪在再造膠墊上，讓參觀者可於上面赤足遊走以及使用上面的**互動展示屏幕**。兩種薄膜皆高度耐用及可於展覽完畢後再用於其他展覽工程上。

香港館於內外均給予參觀者一個**對自然及周邊環境的嶄新體驗及互動**，並做成香港館的獨特本質。