

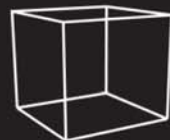
Prologue

Digital technology is running as a leading force worldwide, and the interface between China and the world is undergoing a massive change. More connections will be created without limits from the physical location. According to this picture, Hong Kong is just like a hub with an internal hyper flow. It is constructed in a compact and sophisticated fashion. The purpose is to drive the fluidity to infinity.

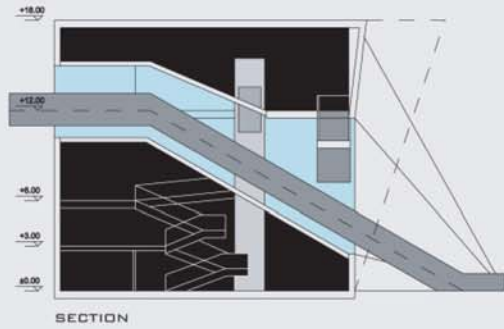
Concept

Hyper Hub is a role play of Hong Kong between China and the world. The dramatic performance comes from its excellent fluidity. The script of the design is based on this observation angle. Space composition - An external space penetrates through a mass and interacts with each other. The folding surface and the glass channel are formed from this process. The interaction is further reinforced by the connection elements. In doing this, a striking walk through experience is created and strengthens the performance of the role.

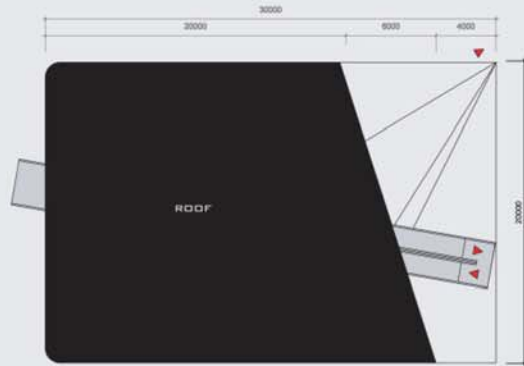
HYPER HUB



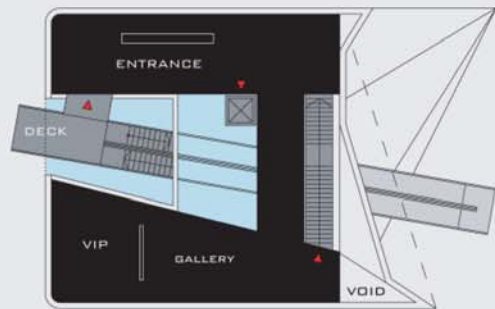
FLOOR	AREA(M ²)
3	242
2	260
M	165
G	380
TOTAL 1050	



SECTION



ROOF PLAN



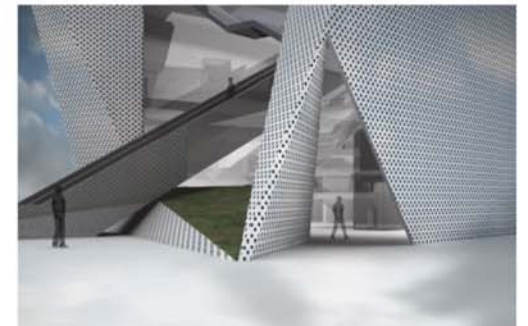
THIRD FLOOR



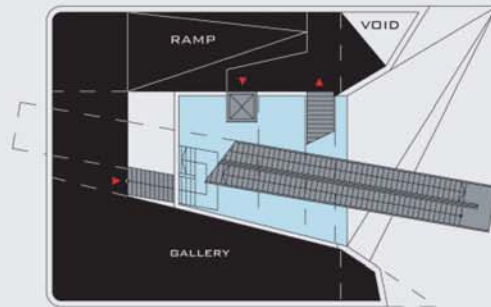
ENTRANCE CHANNEL

Material

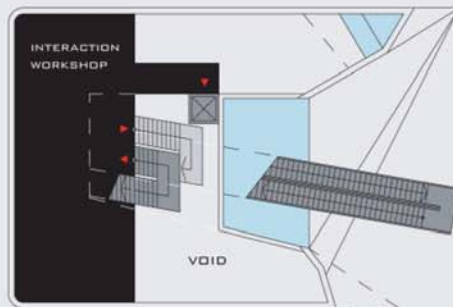
1. The outer surface is covered by white penetrated metal panels, which form a surrounding air layer. This enhances the sense of fluidity and helps to cool down the object.
2. The channel is constructed of transparent glass. It becomes the interaction space between the interior and exterior.
3. Connection elements, inside the channel, are wrapped by highly reflective steel panel; they exaggerate the dynamic of the flow.



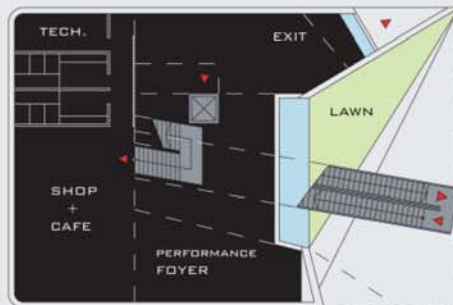
EXIT



SECOND FLOOR

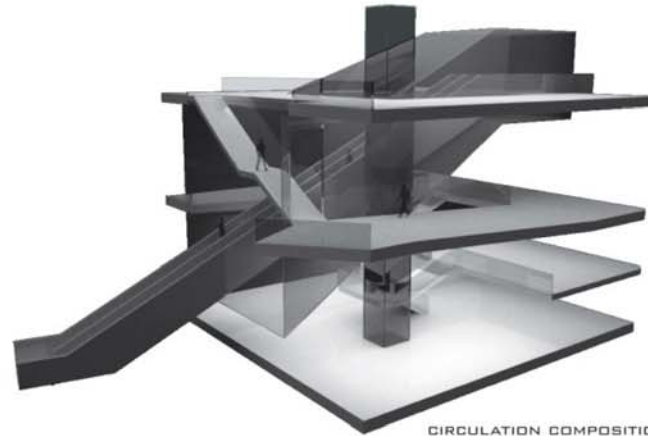


MEZZANINE FLOOR



GROUND FLOOR

ALL DRAWINGS IN 1:300



CIRCULATION COMPOSITION

Walk through

1. The flow is started from the escalator at the east side, and climbs into the channel; visitors can preview the internal space before their entry.
2. When visitors arrive at the entrance, there is a deck stretch outside the opening. They can overlook the west view of the site, and sunlight will flow into the channel.
3. The top floor is divided into south and north parts, and is connected by a bridge that leads to the staircase. It is leading to middle level, across the channel, and above the entry escalator. Visitors can overlook the public plaza and the China pavilion.
4. The staircase that leads to the north part of mid level: a big ramp. There is another staircase under the channel which connects to the mezzanine level.
5. The ground level staircase is horizontally shifted from the above one. With this, visitors can experience the bottom part the channel and look out to the east opening.
6. The exit is located in the north-east corner of the site. The end point meets the start point again. Visitors can join back to the main circulation of the EXPO effectively.

Exhibition

The content is planned according to the level.

In entrance level, shows the process and direction of the Development and Transformation.

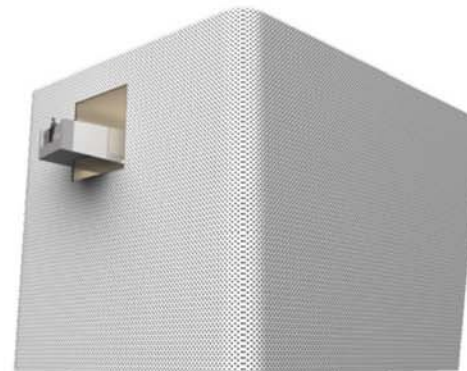
Suggest exhibit: A digital model to show the construction process of Hong Kong with time.

In middle level, shows how do we combine Technology and Creativity to improve life quality.

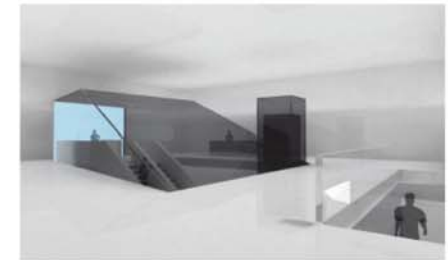
Suggest exhibit: Case studies of outstanding creations in daily aspect.

In ground level, shows the hybrid situation of Culture and Environment.

Suggest exhibit: Interaction workshops with different themes and styles, arranged in mezzanine floor. Live performance in different forms mixed in the foyer.



SOUTH-WEST CORNER



THIRD FLOOR



SECOND FLOOR



MEZZANINE FLOOR



GROUND FLOOR